



ALSET[®]
LED LIGHTING

Nuwave, LLC



2017 Catalog



ALSET

Lighting The Way



About

NuWave has changed the way we live. Nuwave shot into the limelight with its flagship product: The NuWave Oven – a pioneering countertop oven that combines infrared, conduction and convection heat to offer easy and healthy cooking. Like every other NuWave product, ALSET® LED Lighting has been designed to improve lives and help save the environment. A result of the founder's vision for energy-efficient and smart lighting technologies, ALSET® LED Lighting was formed in 2012.

Our Mission

Live Well For Less

Our mission is to deliver our very best and create a range of products that are energy efficient and environment-friendly. We are passionate about health, safety, and environment, and this is reflected in every eco-friendly product that we create.

Our work is driven by the philosophies of:

Safety - Safety is paramount at NuWave. Our products are engineered for security and peace of mind. Each product has multiple safety redundancies built into the design and engineering to ensure that they are safer than most other similar products.

Quality – To offer innovative design and advanced technology to ensure the best performance at the best price.

Value – To combine efficiency and durability to offer one of the fastest ROIs in the industry.

Environmental Awareness - NuWave, LLC. lives by the “green” philosophy. Materials are carefully selected to ensure that each product is safe for the environment. We believe in producing environmentally-conscious, chemical-free products that are both efficient and affordable.

Our History

NuWave, LLC is the proud maker of ALSET® LED Lighting. Its predecessor, IBC-Hearthware, was founded in 1993 and ever since, has been a leader in innovative components, supplying components as OEM household appliance manufacturers. We specialize in developing new products for large corporations, such as Mabe, Electrolux, General Electric, Daewoo, and Whirlpool. With this background, combined with strong technicians, advanced product testing machinery, we have created a strong Quality Control, and product management system. In 2012, we began to implement this knowledge into producing innovative LED luminaires and lamps.

For 24 years, we have focused our goals around delivering high-quality products to satisfied customers.

Our 400,000-square-foot warehouse and distribution center, located next to our company headquarters in Libertyville, IL, holds our stock for immediate purchase and delivery. We pride ourselves on same-day processing on standard orders.

Our Promise

Nuwave's goal to our customers is to maintain top-notch customer satisfaction. That is why we developed an online customer portal on our website which allows partners to track order status, inventory levels, and new product information. We also generate lighting layouts with a (2) day turn-around time so the customer may see how well the fixture performs for their applications. Our warranty is backed by a company with over \$100MM in annual sales, so in the unlikely event of a problem, you know we will stand behind the product.

Our Future

NuWave has a world-class research and development team that is focused on developing innovative solutions in LED lighting. With our passion and devotion to advancements in LED lighting, our team has earned the respect of lighting distributors, architects, designers, engineers, and related professionals worldwide while developing innovative products that will help revolutionize the way we light our world.

Linear Opti-fit Tubes Gen II DLC Type A&B

Compatible with ballast and direct wire



Model #	Reference #	Lumens	Lumens Per Watt	Color Temp (K)	Watts*	Input Voltage
48inch						
TDT48-2L-30K-UL	60843	2,017	115	3000	17	120-277V
TDT48-2L-40K-UL	60787	2,017	115	4000	17	120-277V
TDT48-2L-50K-UL	60788	2,186	125	5000	17	120-277V

ex. (TD48T) 4' Tube - (2L) 2000 Lumens - (30K) 3000 Kelvin - (UL) Universal Voltage 120-277V

Features	Applications
<ul style="list-style-type: none"> • L70 >60,000 hours at 85°C • Nano Plastic lens • Power factor : ≥0.96 • ANSI surge protection • Case quantity: 40 • 250° beam angle • CRI >80 • Non-dimmable • Replaces F32 T8 or F34 T12 system • LM 79/80 and TM-21 reports available • Operating temp -40°C- +45°C / -40°F- +113°F 	<ul style="list-style-type: none"> • Offices • Workshops • Basements • Task lighting • Schools • Retail stores • Airports

*Watts are without Ballast

Direct Wire Tubes Gen II DLC Type B



Model #	Reference #	Lumens	Lumens Per Watt	Color Temp (K)	Watts	Input Voltage
24inch						
TBT24-1L-40K-UL	60839	968	128	3000	7	120-277V
TBT24-1L-40K-UL	60840	967	133	3500	7	120-277V
TBT24-1L-35K-UL	60783	995	136	4000	7	120-277V
TBT24-1L-40K-UL	60784	1,053	145	5000	7	120-277V
48inch						
TBT48-2L-40K-UL	60841	1,923	124	3000	15	120-277V
TBT48-2L-40K-UL	60842	1,988	128	3500	15	120-277V
TBT48-2L-35K-UL	60785	2,053	132	4000	15	120-277V
TBT48-2L-40K-UL	60786	2,183	143	5000	15	120-277V

ex. (TB48) 4' Direct Wire Tube - (2L) 2000 Lumens - (40K) 4000 Kelvin - (UL) Universal Voltage 120-277V

Features	Applications
<ul style="list-style-type: none"> • L70 >60,000 hours at 85°C • Nano Plastic lens • Power factor : ≥0.96 • ANSI surge protection • Case quantity: 40 • 250° beam angle • CRI >80 • Non-dimmable • Replaces F32 T8 or F34 T12 system • LM 79/80 and TM-21 reports available • Operating temp -40°C- +45°C / -40°F- +113°F 	<ul style="list-style-type: none"> • Offices • Workshops • Basements • Task lighting • Schools • Retail stores • Airports

LED Strips/Wraps



TPAL -TS



Model #	Length	Lumens	Lumens Per Watt	Color Temp (K)	Watts	Voltage
TPAL24-2L-50K-UL	2'	2,407	124	5000	19	120-277V
TPAL24-3L-50K-UL*	2'	2,797	122	5000	22	120-277V
TPAL48-4L-50K-UL	4'	4,524	125	5000	36	120-277V
TPAL48-5L-50K-UL*	4'	5,475	122	5000	44	120-277V
TPAL96-8L-50K-UL*	8'	8,944	130	5000	68	120-277V

ex. (TPAL24) 2' Strip Wide – (2L) 2000 Lumens – (50K) 5000 Kelvin – (UL) Universal Voltage 120-277V

3500K/4000K/4500K/5000K available • Occupancy Sensor Available • Dimming Available *Emergency Backup available

TC = Tandem With cords or conduit TS = Tandem with Seamless Connector (end to end)

TPAL -TC



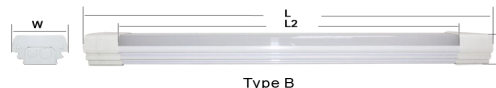
Features

- Replace outdated, inefficient strip lighting with low wattage, high lumen solutions
- Compact size with flexible mounting: wall ceiling and suspended
- Available 2', 4', and 8' lengths
- Workable voltage 90-305V
- Full range of options: Occupancy Sensor, Emergency Backup, and Tandem wiring, dimming
- Available in the following color temperatures: 3000K, 3500K, 4000K, 5000K

- TC Model - IP65 with water-proof connector similar to PG9 connector
- TS Model - Damp rated
- Compatible with most lighting control systems
- No loss in lumen output in cold environments
- 7-year warranty
- CRI >80
- Chain hanging assembly & mounting kit
- Seamless Connector for TS tandem wiring included
- Cord Connector for TC tandem wiring included



Type A & C



Type B

Model	L(Inches)			L2 (Inches)	W (Inches)	H (Inches)
	A	B	C	A B C	A B C	A B C
TPAL24	23.6	25.6	23.6	21.3	3.7	2.4
TPAL48	47.2	49.2	47.2	44.9	3.7	2.4
TPAL96	94.5	96.5	94.5	92.1	3.7	2.4

Options

- Emergency battery back-up (remote required)
- Occupancy sensor
- 0-10V Dimming
- 6' Cord/Whip

Applications

- Retail stores
- Industrial
- Residential
- Vanity lighting
- Under cabinets
- Shelving
- Warehouses

Troffers



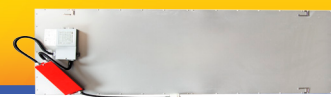
Reference: 51118

Model #	Reference #	Lumens	Lumens Per Watt	Color Temp (K)	Watts	Input Voltage
1x4						
TR14-4L-35K-UL	51200	3,538	100	3500	35	120-277V
TR14-4L-40K-UL	51201	3,684	105	4000	35	120-277V
2x2						
TR22-4L-35K-UL	51202	3,609	101	3500	36	120-277V
TR22-4L-40K-UL	51013	3,787	104	4000	36	120-277V
MTR22A-6L-40K-UL*	51003	5,592	112	4000	50	120-277V
2x4						
TR24-5L-35K-UL	51118	5,155	103	3500	50	120-277V
TR24-5L-40K-UL	51119	5,367	108	4000	50	120-277V
TR24-8L-35K-UL	51122	8,000	100	3500	80	120-277V
TR24-8L-40K-UL	51123	8,000	100	4000	80	120-277V
MTR24A-6L-40K-UL*	51103	5,736	120	4000	47	120-277V
MTR24-6L-40K-UL	51102	5,715	115	4000	50	120-277V

TR14 - 1' x 2' • TR22 - 2' x 2' • TR24 - 2' x 4' • ex. (TR24) 2x4 Troffer - (8L) 8,000 Lumens - (40K) 4000 Kelvin - (UL) Universal Voltage 120-277V

Features	Applications
<ul style="list-style-type: none"> • L70 >60,000 hours at 85°C • Frosted diffuser to reduce glare • Power factor : ≥0.99 • CRI >80 • 0-10 V DC dimming standard • LM 79/80 and TM-21 reports available • Operating temp -40°C- +60°C / -40°F- +140°F • Input Voltage 120-277V * A - A12 prismatic lens 	<ul style="list-style-type: none"> • Offices • Workshops • Indoor area lighting • Healthcare facilities • Schools • Retail stores
<ul style="list-style-type: none"> • Workable Voltage 90-305V • Dimensions (TR14): 47.7" x 11.7" x 4.3" • Dimensions (TR22): 23.7" x 23.7" x 4.3" • Dimensions (TR24): 47.7" x 23.7" x 4.3" • UL, DLC, RoHS and FCC certified • Rated for damp locations • Isolated type power driver is shock and fire resistant • Lightweight for easy Installation • 7-year warranty 	

Flat Panel



Model #	Reference #	Lumens	Lumens Per Watt	Color Temp (K)	Watts	Input Voltage
1x4						
FPT14-4L-50-UL-DM-B	60735	4,181	110	5000	38	120-277V
2x2						
FPT22-3L-50-UL-DM-B	60736	3,455	116	5000	30	120-277V
FPT22-4L-50-UL-DM-B	60737	4,070	109	5000	38	120-277V
FPT22-5L-50-UL-DM-B	60738	5,409	115	5000	47	120-277V
2x4						
FPT24-5L-50-UL-DM-B	60739	5,843	120	5000	48	120-277V
FPT24-6L-50-UL-DM-B	60740	6,786	114	5000	59	120-277V

FPT14 - 1' x 4' • FPT22 - 2' x 2' • FPT24 - 2' x 4' • ex. (FPT24) 2x4 Troffer - (4L) 4,000 Lumens - (50K) 5000 Kelvin - (UL) Universal Voltage 120-277V

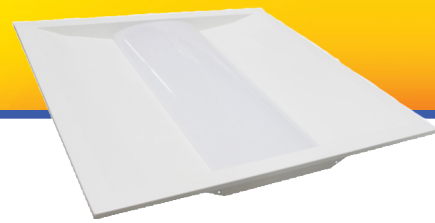
Features	Applications
<ul style="list-style-type: none"> • L70 >50,000 hours at 85°C • Power factor : ≥0.9 • Instant on to full brightness • CRI >80 • 0-10 V DC dimming standard • LM 79/80 and TM-21 reports available • Input Voltage 120-277V 	<ul style="list-style-type: none"> • Office • Workshops • Indoor area lighting • Healthcare facilities • Schools • Retail stores
<ul style="list-style-type: none"> • Workable voltage 90-305V • ETL, DLC, and FCC certified • Rated for damp locations • Aluminum frame for added durability • Battery Backup available • 7-year warranty • Available in 3000K, 4000K, 4500K, and 5000K • 347-480V available 	



Customer Service: 1-877-689-2573 • Visit us at www.alsetled.com



Architectural Troffer



Reference: 60732

Model #	Reference #	Lumens	Lumens Per Watt	Color Temp (K)	Watts	Input Voltage
2x2						
TRK22-4L-40K-UL	61351	4,248	135	4000	31	120-277V
TRK22-4L-50K-UL	60727	4,316	141	5000	30	120-277V
TRK22-5L-40K-UL	61497	5,111	134	4000	38	120-277V
TRK22-5L-50K-UL	61498	5,450	144	5000	37	120-277V
2x4						
TRK24-5L-40K-UL	61353	5,482	142	4000	38	120-277V
TRK24-5L-50K-UL	60729	5,526	144	5000	37	120-277V
TRK24-7L-40K-UL	61499	6,503	140	4000	46	120-277V
TRK24-7L-50K-UL	61500	6,942	148	5000	46	120-277V

• TRK22 - 2' x 2' • TRK24 - 2' x 4' • ex. (TRK24) 2x4 Troffer - (7L) 7,000 Lumens - (40K) 4000 Kelvin - (UL) Universal Voltage 120-277V

Features	Applications
<ul style="list-style-type: none"> • L70 >60,000 hours at 85°C • Frosted diffuser to reduce glare • Power factor : ≥0.99 • Instant on to full brightness • CRI >80 • Wide light distribution • 0-10 V DC dimming standard • LM 79/80 and TM-21 reports available • Operating temp -40°C- +60°C / -40°F- +140°F • Input Voltage 120-277V 	<ul style="list-style-type: none"> • Offices • Workshops • Indoor area lighting • Healthcare facilities • Schools • Retail stores

CLAW Retrofit Solution



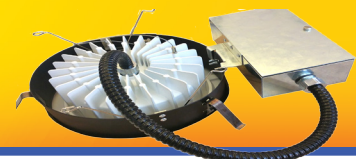
Model #	Lumens	Lumens Per Watt	Color Temp (K)	Watts	Input Voltage	HID Equivalent
2x2						
STRK22-4L-40K-UL	3,856	129	4000	29	120-277V	75W
STRK22-4L-50K-UL	3,935	133	5000	29	120-277V	75W
STRK22-5L-40K-UL	4,827	134	4000	35	120-277V	95W
STRK22-5L-50K-UL	4,947	136	5000	36	120-277V	95W
2x4						
STRK24-5L-40K-UL	5,557	138	4000	40	120-277V	95W
STRK24-5L-50K-UL	5,629	141	5000	39	120-277V	95W
STRK24-6L-40K-UL	6,484	144	4000	44	120-277V	115W
STRK24-6L-50K-UL	6,674	148	5000	45	120-277V	115W

• STRK22 - 2' x 2' • STRK24 - 2' x 4' • ex. (STRK24) 2x4 Troffer - (6L) 6,000 Lumens - (40K) 4000 Kelvin - (UL) Universal Voltage 120-277V

Features	Applications
<ul style="list-style-type: none"> • L70 >60,000 hours at 85°C • Uses magnets to allow flexibility in installation • Driver will operate 1, 2, or 3 strips 	<ul style="list-style-type: none"> • Workable voltage 90-305V or 180-528V • Operating temp -40°C- +60°C / -40°F- +140°F • 5 year warranty

Downlight Retrofit

Retrofit Solution



Reference: 51614 (4"-6")

Reference: 51616

Model #	Reference #	Lumens	Lumens Per Watt	Color Temp (K)	Watts	HID Equivalent	Input Voltage
4-6"							
RF4-6L-35K-ST	51504	609	103	2700	6	65W - Incandescent	120V
RF6-6L-35K-ST	51505	627	107	3500	6	65W - Incandescent	120V
RF6-10L-35K-ST	51612	610	104	2700	6	65W - Incandescent	120V
RF6-14L-35K-ST	51613	654	111	3500	6	65W - Incandescent	120V
8-10"							
RF8/10-22L-40K-UL	51614/51682	1,002	106	2700	9	85W - Incandescent	120-277V
RF8/10-30L-40K-UL	51615/51684	1,047	111	3500	9	85W - Incandescent	120-277V
RF8/10-40L-40K-UL	51616/51686	1,407	108	2700	13	100W - Incandescent	120-277V

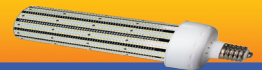
*Ballast must be removed to allow direct 100-277V connection

ex. (RF6) 6" - (14L) 1,400 Lumens - (27K) 2700 Kelvin - (ST) Standard Voltage 120V or (UL) Universal Voltage 120-277V

Features	Applications
<ul style="list-style-type: none"> L70 >60,000 hours at 85°C Frosted lens to reduce glare Power factor : ≥0.95 Instant on to full brightness CRI >80 TRIAC dimming standard (4" and 6") 0-10 V DC dimming standard (Only 8"/10" retrofits) LM 79/80 and TM-21 reports available Input voltage 120V (Only for 4" and 6" retrofits) Workable voltage 100-135V (Only for 4" and 6" retrofits) Input voltage 120-277V (Only for 8"/10" retrofits) Workable voltage 90-305V (Only for 8"/10" retrofits) Operating temp -40°C- +45°C / -40°F- +113°F Dimensions (4"): 5.20" x 2.17" (4.80 aperture) 	<ul style="list-style-type: none"> Bathrooms Kitchens Basements Other damp locations Atriums Church ceilings Lobbies
<ul style="list-style-type: none"> Dimensions (6"): 7.56" x 2.42" (3.43 aperture) Dimensions (8"): 11.2" x 4.92" UL, Energy Star, RoHS and FCC certified Rated for damp locations (4", 6") Rated for wet locations (8" - 10") Lower maintenance costs Superior heat management See compatible dimmer list at www.asetled.com Easy installation Includes E26 adapter (only for 4" and 6" retrofits) 8" and 10" models may be used in new construction 7-year warranty 	

Ornamental Mogul Base Lamps

Retrofit Solution



Model #	Reference #	Lumens	Lumens Per Watt	Color Temp (K)	Watts	HID Equivalent
CO-5L-50K-UL-E40	58113	4,500	100	5000	45	175W
CO-10L-50K-UL-E40	58123	10,000	125	5000	80	250W
CO-16L-50K-UL-E40	58133	16,000	128	5000	125	600W

ex. (CO) Ornamental Lamp - (16L) 16,000 Lumens - (50K) 5000 Kelvin - (UL) Universal Voltage 120-277V - (E40) Base Type

Features	Applications
<ul style="list-style-type: none"> L70 >60,000 hours at 85°C Power factor : 0.9 Instant to full on brightness Wide light distribution CRI >80 Operating temp -40°C- +60°C / -40°F- +140°F Input voltage 120-277V Dimensions (45W): 3.65" x 10.79" Dimensions (80W): 5.51" x 11.34" 	<ul style="list-style-type: none"> Indoor/outdoor lighting Warehouses Street lights Bollards HID lamps retrofit
<ul style="list-style-type: none"> Dimensions (125W): 5.51" x 13.70" UL, DLC, RoHS and FCC certified IP65 rated for wet locations Fits most standard acorn style exterior fixtures E40 mogul base is standard, E26 also available Light weight for easy installation 7-year warranty 	

Reference: 58113



Lowbays/Highbays



Reference: 52000

Model #	Reference #	Lumens	Lumens Per Watt	Color Temp (K)	Watts	HID Equivalent
LB-8L-40K-UL	52075	9,613	131	4000	73	175W
LB-8L-50K-UL	52076	9,859	134	5000	73	175W
HB-11L-40K-UL	52077	12,787	128	4000	99	250W
HB-11L-50K-UL	52078	12,959	129	5000	99	250W
HB-18L-40K-UL	52000	18,025	133	4000	135	400W
HB-18L-50K-UL	52001	18,704	137	5000	136	400W
HB-28L-40K-UL	52050	29,245	131	4000	222	1000W
HB-28L-50K-UL	52051	29,589	134	5000	220	1000W
HBC-17L-30K-UL	52173	17,127	117	3000	148	400W

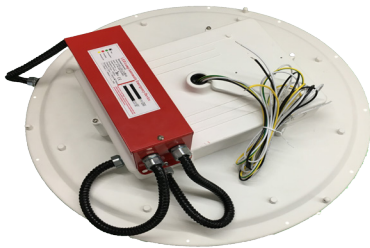
LB - Lowbay HB - Highbay HBC - Highbay with 90 CRI

ex. (LB) Lowbay - (8L) 8,000 Lumens - (40K) 4000 Kelvin - (UL) Universal Voltage 120-277V

Features	Applications
<ul style="list-style-type: none"> • L70 >60,000 hours at 85°C • Frosted lens to reduce glare • Power factor : ≥0.99 • Instant on to full brightness • Beam angle : wide • Wide light distribution • CRI >80 • 0-10 V DC dimming standard • Input voltage 120-277V or 347-480V 	<ul style="list-style-type: none"> • Warehouses • Storage areas • Retail stores • Malls • Convention centers • Manufacturing plants • Parking garage • Stadiums • Healthcare facilities • Food Processing Facilities



Highbays Best Selling Accessories



Battery Back-Up



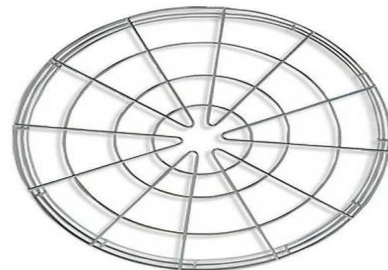
Hook



Occupancy Sensor w/ Gripper



Occupancy Sensor (480V available)



Wireguard

Highbays Up Down



Reference: 61061

Model #	Reference #	Lumens	Lumens Per Watt	Color Temp (K)	Watts	HID Equivalent
LBP-11L-40K-UL	61061	11,000	110	4000	100	250W
LBP-11L-50K-UL	61062	11,000	110	5000	100	250W
HBP-18L-40K-UL	61063	18,000	110	4000	145	350W
HBP-18L-50K-UL	61064	18,000	110	5000	145	350W
HBP-24L-40K-UL	61065	24,000	110	4000	218	550W
HBP-24L-50K-UL	61066	24,000	110	5000	218	550W

ex. (HBP) Highbay - (18L) 18,000 Lumens - (50K) 5000 Kelvin - (UL) Universal Voltage 120-277V

Features	Applications
<ul style="list-style-type: none"> L70 >60,000 hours at 85°C Frosted lens to reduce glare Power factor : ≥0.99 15% Up light for great retail application Instant on to full brightness 	<ul style="list-style-type: none"> Workable voltage 90-305V or 180-528V Operating temp -40°C- +60°C / -40°F- +140°F Dimensions: 21.6" x 21.6" x 5.2" UL, DLC, RoHS and FCC certified

Linear Highbays



Model #	Reference #	Lumens	Lumens Per Watt	Color Temp (K)	Watts	HID Equivalent
HBL-16L-40K-UL	61072	15,909	152	4000	104	250W
HBL-16L-50K-UL	61073	16,073	154	5000	103	250W
HBL-19L-40K-UL	61484	19,000	150	4000	126	320W
HBL-19L-50K-UL	61485	19,000	150	5000	126	320W
HBL-30L-40K-UL	61074	30,316	143	4000	211	530W
HBL-30L-50K-UL	61075	30,684	145	5000	210	530W
HBL-32L-40K-UL	61076	31,433	147	4000	212	530W
HBL-32L-50K-UL	61077	32,042	149	5000	213	530W
HBL-48L-40K-UL	61078	47,694	147	4000	323	800W
HBL-48L-50K-UL	61079	48,185	149	5000	321	800W

ex. (HBL) Highbay - (19L) 19,000 Lumens - (50K) 5000 Kelvin - (UL) Universal Voltage 120-277V

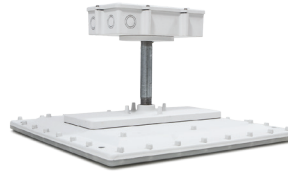
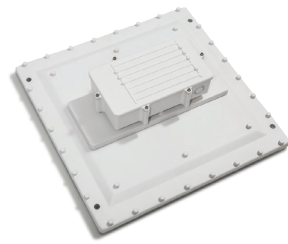
Features	Applications
<ul style="list-style-type: none"> L70 >60,000 hours at 85°C Frosted lens to reduce glare Power factor : ≥0.99 Instant on to full brightness Beam angle : wide Wide light distribution CRI >80 0-10 V DC dimming standard Input voltage 120-277V or 347-480V 	<ul style="list-style-type: none"> Warehouses Storage areas Retail stores Malls Convention centers Manufacturing plants Airports Stadiums Healthcare facilities



Customer Service: 1-877-689-2573 • Visit us at www.alsetled.com



Canopy Fixtures



Mounting Plate

CPAD*

CPRR*

53000*

Model #	Reference #	Lumens	Lumens Per Watt	Color Temp (K)	Watts	HID Equivalent
CP-11L-40K-UL	53000	11,550	116	4000	99	175-250W
CP-11L-50K-UL	53001	11,550	117	5000	100	175-250W
CPAD-11L-40K-UL*	60016	11,550	117	4000	99	175-250W
CPAD-11L-50K-UL*	60006	11,550	117	5000	99	175-250W
CPAD-11L-40K-UL*	60016	11,550	117	4000	99	175-250W
CPRR-11L-40K-UL*	60017	11,550	117	4000	99	175-250W
CPRR-11L-50K-UL*	60007	11,550	117	5000	99	175-250W

ex. (CP) Canopy - (11L) 11,000 Lumens - (50K) 5000 Kelvin - (UL) Universal Voltage 120-277V

*Recessed • AD: Attached Drive • PR: 3/4" Pipe Remote Mount

Features

- Three style available for ease of installation:
 - One with a remote driver attached to 3/4" conduit (CPRR) is located inside canopy recessed fixture
 - Alternate Option is driver box attached (CPAD) to fixture recessed fixture
 - Surface mount fixture
- High efficacy at 116-117 lumens per watt
- Superior heat management yields 60,000 hours life
- Lower maintenance costs
- Available 4000K and 5000K color temperatures
- L70 >60,000 hours at 85°C
- Frosted lens to reduce glare
- Power factor : ≥0.99
- Instant on to full brightness
- Mounting plate available 23" x 23" outside dimension
- 0-10V dimming standard
- Operating temp -40°C- +60°C / -40°F- +140°F
- Input voltage 120-277V
- Workable voltage 90-305V
- Dimensions CP (125W): 5.51"x 13.70" x 13.70"
- Dimensions CPAD + CPRR: 18.77"x 18.17" x 3.70"
- Driver Dimensions: 10" x 6" x 2.25"
- Pending UL, DLC, RoHS and FCC certification
- NSF Certified Splash zone/ Non-food zone

- IP65 rated for wet locations
- Title 24 compliant
- LM 79/80 reports available
- Wide light distribution
- CRI >80
- 7-year warranty

Applications

- Indoor/outdoor lighting
- Warehouses
- Gas stations
- Entryways & walkways
- Parking garages
- Manufacturing plants
- Loading docks

Street Lights



Reference: 54103

Model #	Reference #	Lumens	Lumens Per Watt	Color Temp (K)	Watts	HID Equivalent
SLA-3L-50K-UL-PC-DM	54103	3,935	130	5000K	30	70W
SLA-5L-50K-UL-PC-DM	54104	5,202	136	5000K	38	100W
SLA-8L-50K-UL-PC-DM	54105	7,851	134	5000K	58	150W
SLA-10L-50K-UL-PC-DM	54106	10,451	133	5000K	78	200W
SLA-11L-50K-UL-PC-DM	54107	12,028	133	5000K	90	250W
SLA-16L-50K-UL-PC-DM	54108	16,870	131	5000K	129	320W
SLA-20L-50K-UL-PC-DM	54300	19,500	130	5000K	150	400W
SLA-27L-50K-UL-PC-DM	54109	29,887	130	5000K	230	1000W
SLA-10L-50K-UL-PC-ND	54132	10,451	133	5000K	78	200W
SLA-11L-50L-UL-PC-ND	54133	12,028	133	5000K	90	175W
SLA-16L-50K-UL-PC-ND	54134	16,870	131	5000K	129	320W
SLA-20L-50L-UL-PC-ND	54136	19,500	130	5000K	150	400W
SLA-27L-50K-UL-PC-ND	54135	29,887	130	5000K	230	1000W

ex. (SLA) Street Light - (27L) 27,000 Lumens - (50K) 5000 Kelvin - (T3) Type 3 - (UL) Universal Voltage 120-277V - (UH) Voltage 347-480V- (SL) Silver - (PC) Photocell Option - (DM) Dimming - (ND) None Dimming

Features		Applications
<ul style="list-style-type: none"> • Polycarbonate lensed optics provides superior light distribution • Power Factor : ≥0.99 • Instant on to full brightness • CRI >70 • 0-10V dimming standard • LM 79/80 AND TM-21 reports available • Operating Temp -40°F- +140°F / -40°-+60°C (Rh 10-95%) • Storage Temp -4°F- +120°F / -20°C-+48.8°C (Rh 10-95%) • Storage Temp -4°F- +120°F / -20°C-+48.8°C (Rh 10-95%) • Input voltage 120-277V or 347-480V • Workable voltage 90-305V or 180-528V • Dimensions (HxWxL): 3.4" x 11.4" x 13.4-29.3" • Weight 8-20 lbs 	<ul style="list-style-type: none"> • Wind and salt spray resistant • ETL, RoHS and FCC certified • IP65 Rated for wet locations • 10kV Surge Protection • Easy installation • Photocell option available • Easy access panel • Sleek modern design is both aesthetic and functional • Light gray color standard (other colors available) • 2 3/8" slipfitter standard, consult ALSET LED for other mounting options • 7-year limited warranty • Glare shield available 	<ul style="list-style-type: none"> • Roadways • Industrial parks • Outdoor parking structures • Area and perimeter lighting

Flood Lights



Reference: 52203

Model #	Reference #	Lumens	Lumens Per Watt	Color Temp (K)	Watts	CRI	HID Equivalent
FL-3L-50K-A3-UL-SL	52203	3,124	99	5000	32	>70	70W
FL-5L-50K-A3-UL-SL	52204	4,926	99	5000	50	>70	100W
FL-8L-50K-A3-UL-SL	52205	7,834	98	5000	80	>70	150W
FL-10L-50K-A3-UL-SL	52206	9,954	100	5000	100	>70	200W
FL-15L-50K-A3-UL-SL	52207	14,476	104	5000	139	>70	250W
FL-22L-50K-A3-UL-SL	52208	21,667	102	5000	213	>70	400W
FL-29L-50K-A3-UL-SL	52209	28,666	102	5000	282	>70	750W
FL-40L-50K-A3-UL-SL	52210	40,630	100	5000	405	>70	1000W
FL-60L-50K-A3-UL-SL	52211	59,145	96	5000	614	>70	1500W
FLA-10L-50K-A3-UL-SL	52200	11,102	124	5000	89	>80	200W
FLA-15L-50K-A3-UL-SL	52201	15,914	128	5000	125	>80	250W
FLA-20L-50K-A3-UL-SL	52202	28,123	128	5000	219	>80	400W

ex. (FL) Flood - (60L) 60,000 Lumens - (50K) 5000 Kelvin - (A3) Beam Angle - (UL) Universal Voltage 120-277V - (SL) Silver

Features

- Polycarbonate lens and discrete LED optics provide superior light distribution
- Power factor : ≥ 0.99
- Instant on to full brightness
- 0-10V dimming standard
- LM 79/80 and TM-21 reports available
- Operating temp -30°C - $+50^{\circ}\text{C}$ / -22°F - $+122^{\circ}\text{F}$
- Input voltage 120-277V or 347-480V
- Workable voltage 90-305V or 180-528V
- Discrete LED optics for superior optic control
- ETL, DLC, RoHS and FCC certified
- IP65 rated for wet locations
- 10kV surge protection
- Revolutionary heat sink design for superior heat management
- Consult factory for photometric and commissioning data
- 7-year warranty

Options

- Glare shield
- Dimming capability
- Tenon mount

Applications

- Landscape illumination
- Parking lots
- Sports lighting
- Signage
- Glare Shield
- Photocell
- Slip-fitter



Reference: 52209

Parking Lot Lights

Reference: 54032



Model #	Reference #	Lumens	Lumens Per Watt	Color Temp (K)	Watts	HID Equivalent
PL-4L-40K-T3-AA-UL-DB	54033	4,470	94	4000	47	70W
PL-8L-40K-T3-AA-UL-DB	54034	7,537	100	4000	76	150W
PL-9L-40K-T3-AA-UL-DB	54035	9,315	95	4000	98	175W
PL-14L-40K-T3-AA-UL-DB	54036	13,986	97	4000	144	300W
PLA-11L-40K-T3-AA-UL-DB	54020	13,073	121	4000	100	250W
PLA-16L-40K-T3-AA-UL-DB	54021	16,263	127	4000	128	400W
PLA-25L-40K-T3-AA-UL-DB	54022	27,758	122	4000	226	1000W

ex. (PL) Parking Lot - (14L) 14,000 Lumens - (40K) 4000 Kelvin - (T3) Type 3 - (AA) Adapter - (UL) Universal Voltage 120-277V - (DB) Dark Bronze

Features		Applications
<ul style="list-style-type: none"> • Power factor: ≥ 0.99 • Instant on to full brightness • CRI >70 • 0-10V dimming standard • LM 79/80 and TM-21 reports available • Operating temp -40°F- +140°F/ -40°C-+60°C • Input voltage 120-277V or 347-480V • Workable voltage 90-305V or 180-528V • Weight: 11-20 lbs 	<ul style="list-style-type: none"> • ETL, DLC, RoHS and FCC certified • Rated for wet locations • 10kV surge protection standard • Photocell optional • Lightweight for easy installation • Consult ALSET LED for mounting options • 7-year warranty • PLA = Improved Efficiency • AA adaptor - Adjustable knuckle adaptor • AB adaptor - Straight mount adaptor 	<ul style="list-style-type: none"> • Parking lots • Pathways • Roadways

Tunnel Lights

Reference: 53200



Model #	Reference #	Lumens	Lumens Per Watt	Color Temp (K)	Watts	HID Equivalent
TU-12L-50K-A1-UL	53200	12,135	135	5000	90	250W
TU-15L-50K-A1-UL	53201	17,243	135	5000	128	400W
TU-24L-50K-A1-UL	53202	25,479	135	5000	199	1000W

ex. (TU) Tunnel - (24L) 24,000 Lumens - (50K) 5000 Kelvin - (A1) Beam Angle - (UL) Universal Voltage 120-277V

Features		Applications
<ul style="list-style-type: none"> • Polycarbonate lens • Power factor : 0.99 • Instant on to full brightness • CRI >80 • 0-10V dimming standard • LM 79/80 and TM-21 reports available • Operating temp -20°C- +50°C / -4°F- +122°F • Input voltage 120-277V or 347-480V • Workable voltage 90-305V or 180-528V 	<ul style="list-style-type: none"> • ETL, DLC, RoHS and FCC certified • Rated for wet locations • 10kV surge protection included • Adjustable beam angle • Revolutionary heat sink design for superior heat management • 7-year warranty 	<ul style="list-style-type: none"> • Tunnels • Street underpasses

New Parking Lot/Wall Pack

Pole



Model #	Reference #	Lumens	Lumens Per Watt	Color Temp (K)	Watts	HID Equivalent
PLSN-8L-50K-UL-D	61146	8,474	141	5000	60	150W
PLSN-11L-50K-UL-D	61148	12,412	138	5000	90	225W
PLSN-15L-50K-UL-D	61150	16,055	133	5000	121	300W
PLSN-19L-50K-UL-D	61152	19,355	130	5000	149	370W
PLSN-25L-50K-UL-D	61160	25,202	137	5000	184	460W
PLSN-32L-50K-UL-D	61165	31,295	128	5000	244	610W
PLSN-40L-50K-UL-D	61170	39,390	128	5000	308	770W

ex. (PLSN) New Parking Lot - (25L) 25,000 Lumens - (50K) 5000 Kelvin - (UL) Universal Voltage 120-277V
 D = Direct straight Mount Bracket A = Adjustable Knuckle Mount Bracket

Features		Applications
<ul style="list-style-type: none"> • Dark Sky Compliant • Power factor : 0.9 • Instant on to full brightness • CRI >80 • LM 79/80 and TM-21 reports available • 150*85 Degree lens angle • Input voltage 120-277V or 347-480V • Workable voltage 90-305V or 180-528V 	<ul style="list-style-type: none"> • UL, DLC, RoHS and FCC certified • Rated for wet locations IP65 • 7-year warranty • Optional photocell and surge protection function • Matches Wall Pack WPSN series • Standard color is Black - Dark Bronze and Silver available • Must be order as either direct pole mount or adjustable 2 3/8" slip fitter knuckle 	<ul style="list-style-type: none"> • Parking lots • Pathways • Roadways

New Parking Lot/Wall Pack Wall Pack



Model #	Reference #	Lumens	Lumens Per Watt	Color Temp (K)	Watts	HID Equivalent
WPSN-7L-40K-UL	60567	7,320	119	4000	60	150W
WPSN-7L-50K-UL	61173	7,424	121	5000	61	150W
WPSN-7L-57K-UL	61174	7,498	122	5700	61	150W
WPSN-9L-40K-UL	60568	10,232	127	4000	80	200W
WPSN-9L-50K-UL	61176	10,380	129	5000	80	200W
WPSN-9L-57K-UL	61177	10,528	131	5700	80	200W
WPSN-12L-40K-UL	60569	12,251	122	4000	100	250W
WPSN-12L-50K-UL	61179	12,374	123	5000	100	250W
WPSN-12L-57K-UL	61180	12,496	124	5700	100	250W
WPSN-13L-40K-UL	60570	14,190	115	4000	123	300W
WPSN-13L-50K-UL	61182	14,332	116	5000	123	300W
WPSN-13L-57K-UL	61183	14,473	117	5700	123	300W

ex. (WPSN) New Wall Pack - (13L) 13,000 Lumens - (50K) 5000 Kelvin - (UL) Universal Voltage 120-277V

Features		Applications
<ul style="list-style-type: none"> • Dark Sky Compliant Wall Pack • Instant on to full brightness • Rated IP65 	<ul style="list-style-type: none"> • UL, DLC, RoHS and FCC certified • Workable Voltage 120-277V 	<ul style="list-style-type: none"> • Warehouse • Sports venues • Industrial settings

Mini Wall Pack



Model #	Reference #	Lumens	Lumens Per Watt	Color Temp (K)	Watts	HID Equivalent
WPSN-1L-40K-UL	61135	1,100	84	4000	13	30W
WPSN-1L-50K-UL	61136	1,200	92	5000	13	30W
WPSN-2L-40K-UL	61137	1,600	80	4000	20	50W
WPSN-2L-50K-UL	61138	1,700	85	5000	20	50W

ex. (WPSN) New Wall Pack - (1L) 1,000 Lumens - (50K) 5000 Kelvin - (UL) Universal Voltage 120-277V

Features		Applications
<ul style="list-style-type: none"> • Suitable for mounting 10' to 12' • Power Factor > 0.8 • Instant on to full brightness • CRI >80 • Photocell included • LM 79/80 and TM-21 reports available • Operating temp -20°C- +45°C / -4°F- +115°F • Input voltage 120-277V • Workable voltage 90-305V 	<ul style="list-style-type: none"> • Rated for wet locations • Dimensions 10.66" x 5.90" x 2.60" • 5-year warranty • No DLC certification 	<ul style="list-style-type: none"> • Entrance/Exit doors • Warehouse

Wall Packs



Reference: 53055

Model #	Reference #	Lumens	Lumens Per Watt	Color Temp (K)	Watts	HID Equivalent
WP-4L-50K-UL	53055	3,918	68	5000	58	100W
WP-6L-50K-UL	53056	5,838	70	5000	83	175W
WP-9L-50K-UL	53057	8,561	72	5000	119	250W
WP-10L-50K-UL	53058	10,359	69	5000	150	400W
WPA-7L-50K-UL	53107	6,600	110	5000	60	250W
WPA-9L-50K-UL	53109	8,800	110	5000	80	320W
WPA-11L-50K-UL	53111	11,000	110	5000	100	400W
WPA-13L-50K-UL	53113	13,200	110	5000	120	750W
WPA-17L-50K-UL	53117	16,500	110	5000	150	1000W

ex. (WP) Wall Pack - (10L) 10,000 Lumens - (50K) 5000 Kelvin - (UL) Universal Voltage 120-277V

Features		Applications
<ul style="list-style-type: none"> • Polycarbonate double-sided lens for superior light distribution • Power factor : ≥0.99 • Instant on to full brightness • LM 79/80 and TM-21 reports available • Operating temp -20°C- +50°C / -4°F- +122°F • Input voltage 120-277V or 347-480V • Workable voltage 90-305V or 180-528V • ETL, DLC, RoHS and FCC certified • IP65 rated for wet locations 	<ul style="list-style-type: none"> • Photocell option available • Black color standard • Forward throw and downlight design for maximum light coverage • 7-year warranty 	<ul style="list-style-type: none"> • Warehouse • Sports stadiums • Industrial settings • Architectural settings • Parking structures • Pathways



Model #	Reference #	Lumens	Lumens Per Watt	Color Temp (K)	Watts	HID Equivalent
SNRK-13L-50K-UL-DM	60893	12000	120	5000	100	250 W HID
SNRK-15L-50K-UL-DM	60894	15158	126	5000	120	320 W HID
SNRK-19L-50K-UL-DM	60895	20053	134	5000	150	400 W HID
SNRK-25L-50K-UL-DM	60896	27789	139	5000	200	750 W HID
SNRK-30L-50K-UL-DM	60897	30821	128	5000	240	1000 W HID
SNRK-38L-50K-UL-DM	60898	37895	126	5000	300	1500 W HID

ex. (SNRK) EZ HID - (25L) 25,000 Lumens - (50K) 5000 Kelvin - (UL) Universal Voltage 120-277V

Features		Applications
<ul style="list-style-type: none"> • Direct replacement for HID fixture • Power factor : 0.9 • Instant on to full brightness • Workable voltage 90-305V or 180-528V • 0-10V dimming standard 	<ul style="list-style-type: none"> • UL, DLC, RoHS and FCC certified • Flexible mounting bracket 	<ul style="list-style-type: none"> • Canopy • Highbay • Area Mounted Floods • Outdoor shoe box And cobra head



Hazardous Location Fixtures



HLN

HLNB

Model #	Reference #	Lumens	Lumens Per Watt	Color Temp (K)	Watts	HID Equivalent
HLNB-7L-50K-UL	61456	6750	150	5000	45	110W
HLNB-9L-50K-UL	61457	9750	150	5000	65	160W
HLN-10L-50K-UL	61443	10400	130	5000	80	200W
HLN-13L-50K-UL	61444	13000	130	5000	100	250W
HLN-20L-50K-UL	61445	19500	130	5000	150	375W

ex. (HLN) Hazardous Light - (10L) 10,000 Lumens - (50K) 5000 Kelvin - (UL) Universal Voltage 120-277V

Features HLN

- Rugged die cast aluminum construction
- IP66 rated for high ingress protection
- Operation temperature -40°C to 60°C
- Sealed fixture for Class I Division 2 Hazardous Location Group A, B, C & D
- Mounting Options available
- Tempered glass lens
- Power factor : ≥0.95
- Instant on to full brightness
- Corrosion Proof Grade - WF2
- IK Rating - IK08
- Operating temp -40°C- +60°C / -40°F- +140°F
- Input voltage 120-277V
- Workable voltage 90-305V
- UL, DLC Premium, RoHS and FCC certification

Features HLNB

- Rugged die cast aluminum construction
- IP66 rated for high ingress protection
- Operation temperature -40°C to 55°C
- Sealed fixture for Class I Division 2 Hazardous Location Group A, B, C & D
Class II Division 1, Group E, F, G Class III Division 1
- UL, DLC premium Certified
- Up to 150 Lm/W
- 7-year warranty

Applications

- Oil refinery
- Steel mills
- Petrochemical plant
- Wastewater treatment
- Manufacturing plants

ALSET LED WARRANTY

5-YEAR LIMITED WARRANTY

NuWave, LLC warrants that this luminaire, when purchased new and in its original packaging, will be free from defects in material and workmanship and is guaranteed to last 5 years from the date of original purchase.

If this product does not conform to the warranty or guarantee, NuWave, LLC, at its discretion, will send you a replacement luminaire or refund your purchase price upon presentation of purchase receipt and your return of the luminaire, excluding shipping and handling, and labor costs.

Warranty and guarantee are void if product is subject to, but not limited to: Accidents, acts of God, neglect, abuse or misuse, vandalism, improper installation, modification, power surges, faulty service by persons other than the seller or their authorized service provider, misuse per caution statement (see caution statement on product package). NuWave, LLC shall make the final determination of product suitability or defect. This warranty shall be void if product is used for purposes other than those for which it was designed.

For warranty or other questions, please call 877-689-2573 or visit the website www.ALSETLED.com.

REPLACEMENT OR REFUND IS THE SOLE REMEDY AVAILABLE, IN LIEU OF ALL OTHER WARRANTIES, EXPRESS OR IMPLIED, INCLUDING ANY WARRANTY OF MERCHANTABILITY OR FITNESS FOR A PARTICULAR PURPOSE.

INCIDENTAL AND CONSEQUENTIAL DAMAGES ARE HEREBY EXPRESSLY EXCLUDED. The above limitation or exclusion may not be applicable to you if exclusion or limitation of incidental or consequential damages is prohibited by your state. This warranty gives you specific legal rights, and you may also have other rights which vary from state to state.

7-YEAR LIMITED WARRANTY

NuWave, LLC warrants that this luminaire, when purchased new and in its original packaging, will be free from defects in material and workmanship and is guaranteed to last 7 years from the date of original purchase.

If this product does not conform to the warranty or guarantee, NuWave, LLC, at its discretion, will send you a replacement luminaire or refund your purchase price upon presentation of purchase receipt and your return of the luminaire, excluding shipping and handling, and labor costs.

Warranty and guarantee are void if product is subject to, but not limited to: Accidents, acts of God, neglect, abuse or misuse, vandalism, improper installation, modification, power surges, faulty service by persons other than the seller or their authorized service provider, misuse per caution statement (see caution statement on product package). NuWave, LLC shall make the final determination of product suitability or defect. This warranty shall be void if product is used for purposes other than those for which it was designed.

For warranty or other questions, please call 877-689-2573 or visit the website www.ALSETLED.com.

REPLACEMENT OR REFUND IS THE SOLE REMEDY AVAILABLE, IN LIEU OF ALL OTHER WARRANTIES, EXPRESS OR IMPLIED, INCLUDING ANY WARRANTY OF MERCHANTABILITY OR FITNESS FOR A PARTICULAR PURPOSE.

INCIDENTAL AND CONSEQUENTIAL DAMAGES ARE HEREBY EXPRESSLY EXCLUDED. The above limitation or exclusion may not be applicable to you if exclusion or limitation of incidental or consequential damages is prohibited by your state. This warranty gives you specific legal rights, and you may also have other rights which vary from state to state.

LIMITED WARRANTY-STREET/PARKING LOT LUMINAIRES, T8 4' AND 2' TUBES.

NuWave, LLC warrants that this luminaire and T8 4' and 2' tubes, when purchased new and in its original packaging, will be free from defects in material and workmanship and is guaranteed to last 7 years from the date of original purchase.

If this product does not conform to the warranty or guarantee, NuWave, LLC, at its discretion, will send you a replacement luminaire or refund your purchase price upon presentation of purchase receipt and your return of the luminaire, excluding shipping and handling, and labor costs.

Warranty and guarantee are void if product is subject to, but not limited to: Accidents, acts of God, neglect, abuse or misuse, vandalism, improper installation, modification, power surges, faulty service by persons other than the seller or their authorized service provider, misuse per caution statement (see caution statement on product package). NuWave, LLC shall make the final determination of product suitability or defect. This warranty shall be void if product is used for purposes other than those for which it was designed.

For warranty or other questions, please call 877-689-2573 or visit the website www.ALSETLED.com.

REPLACEMENT OR REFUND IS THE SOLE REMEDY AVAILABLE, IN LIEU OF ALL OTHER WARRANTIES, EXPRESS OR IMPLIED, INCLUDING ANY WARRANTY OF MERCHANTABILITY OR FITNESS FOR A PARTICULAR PURPOSE.

INCIDENTAL AND CONSEQUENTIAL DAMAGES ARE HEREBY EXPRESSLY EXCLUDED. The above limitation or exclusion may not be applicable to you if exclusion or limitation of incidental or consequential damages is prohibited by your state. This warranty gives you specific legal rights, and you may also have other rights which vary from state to state.